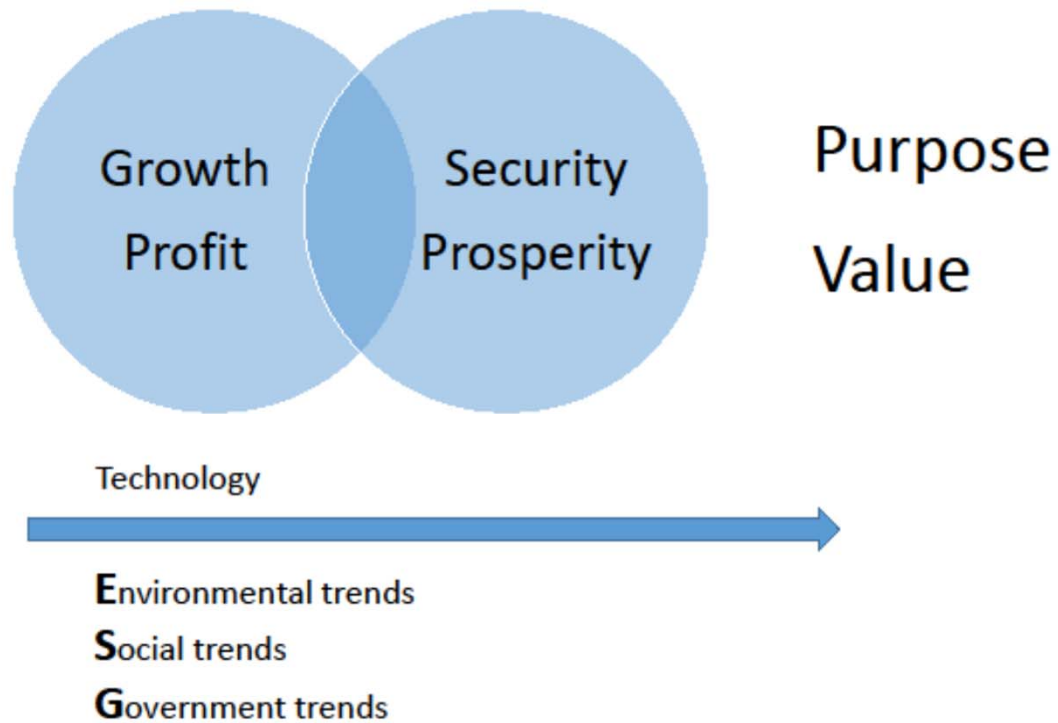
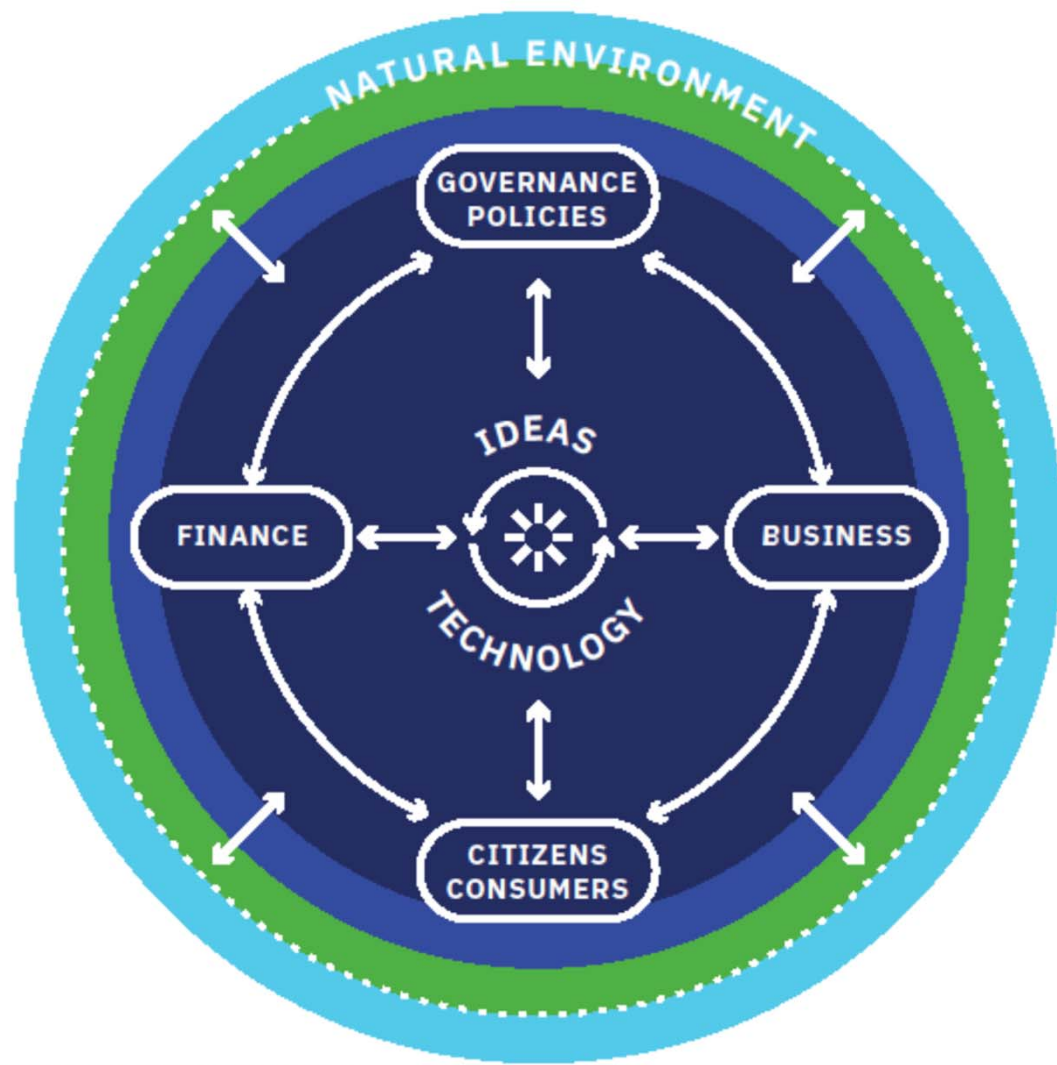


Growing Private/Public Overlapping Interests

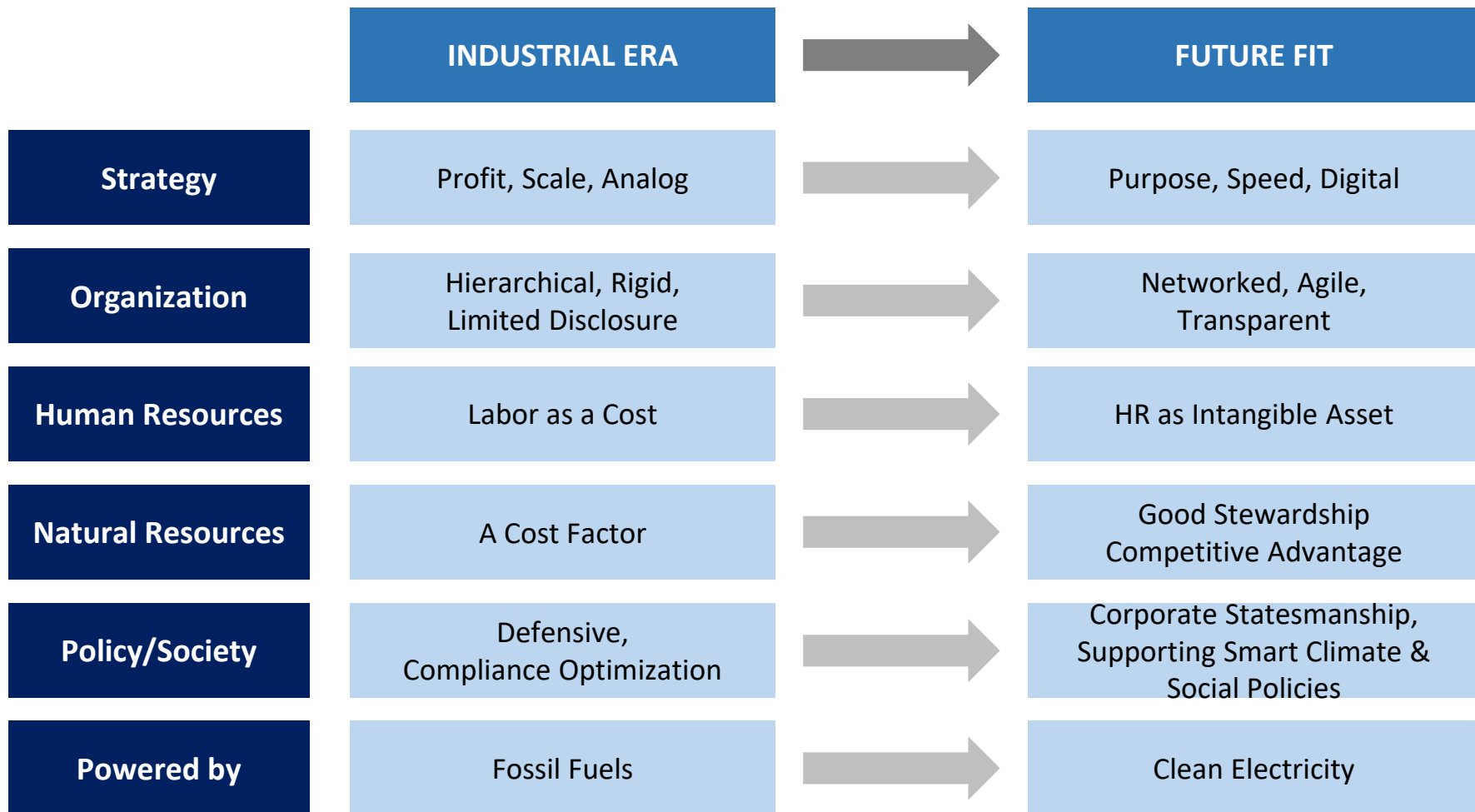


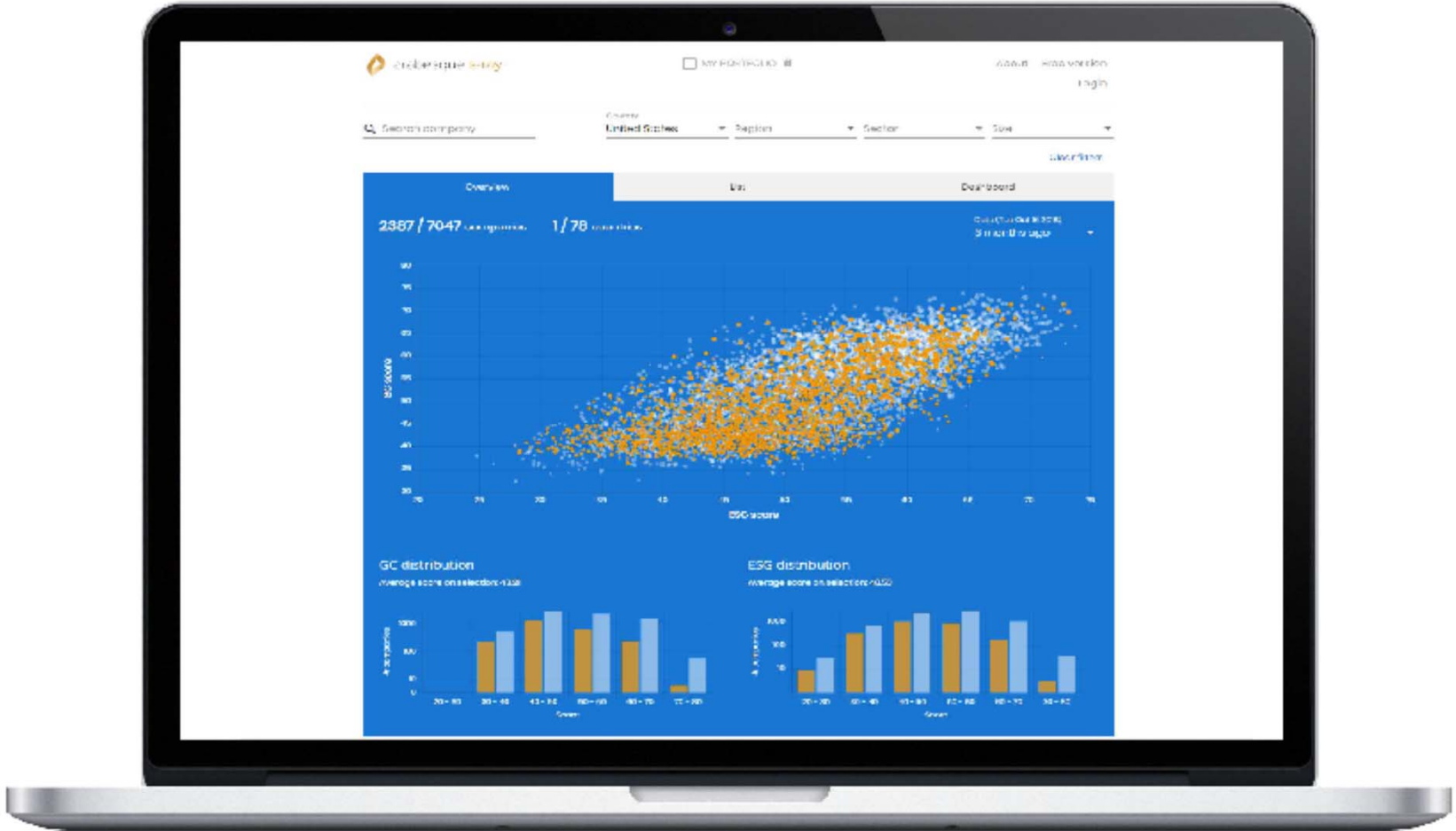


MARKET INTERDEPENDENCIES

GK 8/18

Digitalization & Decarbonization Driving Market Transformation





Search company

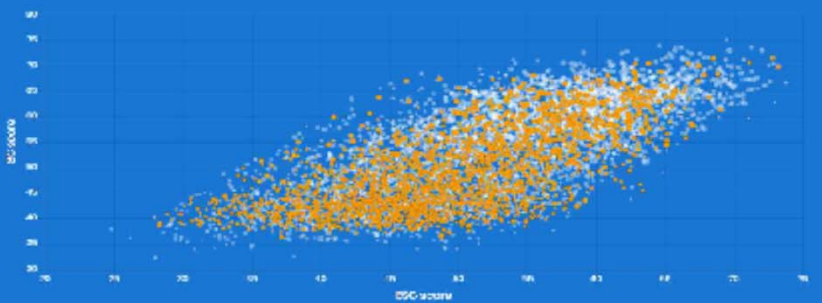
Country: United States | Region: | Sector: | Size: |

subscriber

Overview | List | Dashboard

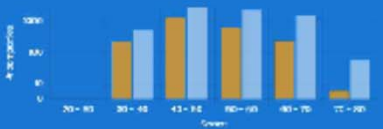
2387 / 7047 companies | 1 / 78 highlighted

Country: United States | Size: 100+ employees



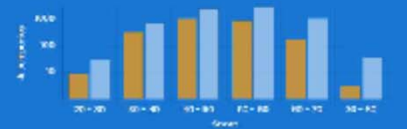
GC distribution

Average score on selected GC



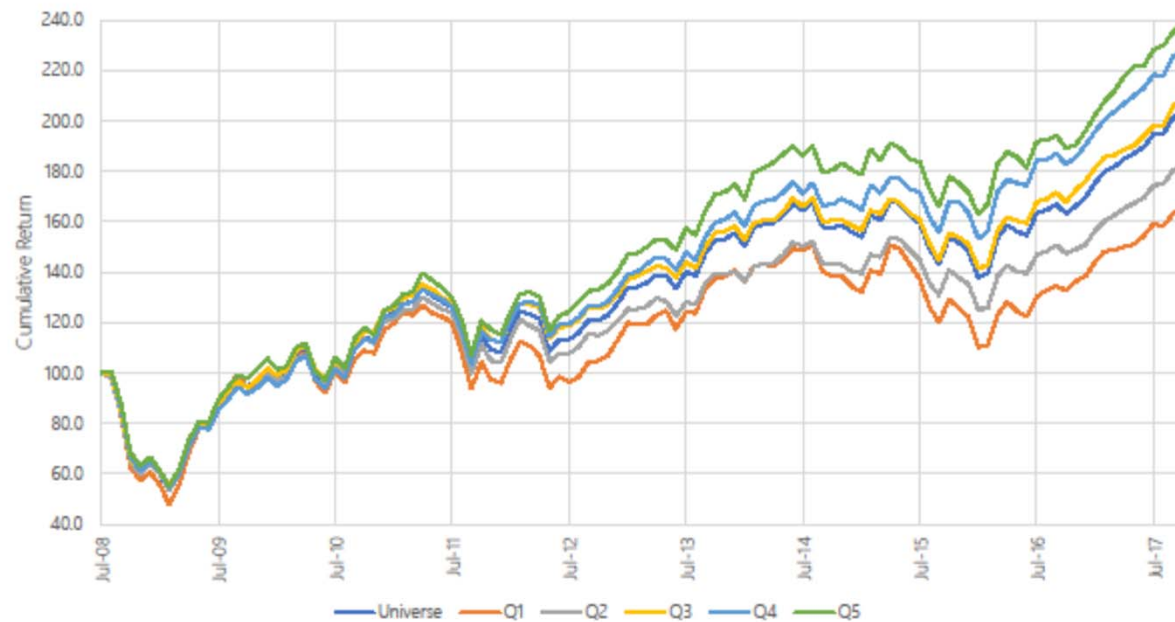
ESG distribution

Average score on selected ESG



S-Ray ESG Score: companies with superior scores significantly outperform the stock market

The "Top 20%" outperform the "Bottom 20%" by 4.3% annually



- Cumulated stock price performance of six portfolios.
- "Universe" is the performance of all companies which are evaluated by Arabesque S-Ray®.
- Q1 to Q5 are quintiles which are selected based on the S-Ray ESG Score.
- Q1 comprises the worst 20% based on the S-Ray ESG score. Q5 comprises the best 20% ESG scores.
- The portfolios are rebalanced on a quarterly basis

Insights:

- The portfolio of the "Top 20%" S-Ray ESG scores outperforms the "Bottom 20%" scores by 4.3% p.a.
- The volatility of the Top 20% is significantly lower than the volatility of the Bottom 20%
- The Bottom 20% companies underperform the overall investment universe by 2.4% p.a.

